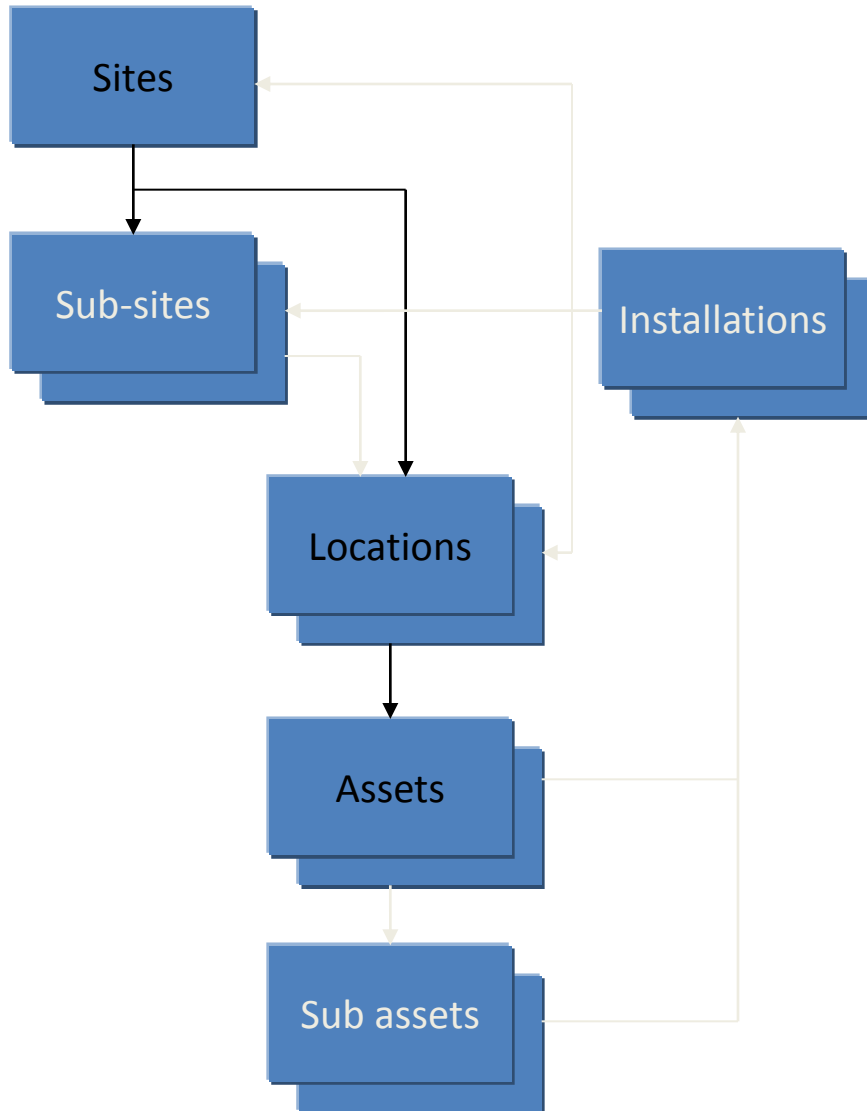


## Asset Management - Summary



### Asset Library

- All generic asset information including attached manuals, specifications, etc.
- Ability to change documents/details in the library item which are then accessible at all assets wherever they are located

### Layered configurable asset hierarchy


- Site Group
- Sites
- Sub-sites (optional)
- Installations (optional)
- Locations
- Assets
  - Maintenance set up by calendar or usage
- Sub-assets (optional)

# Asset Management - Sites

Worthing

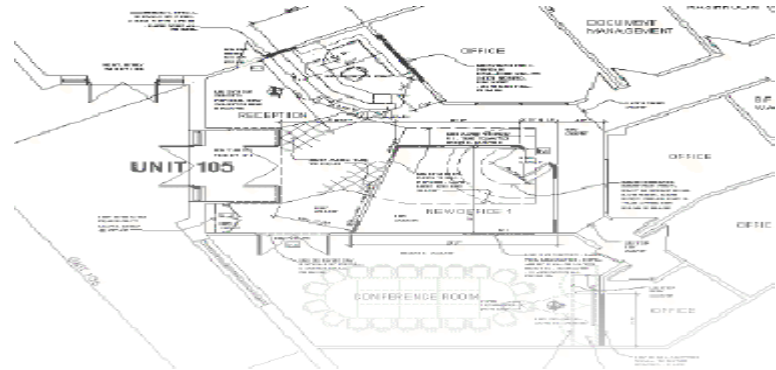
[ view all Site listings ] [ Site assets summary ]

Main Details	Event History	Locations	Installations	Planned Maintenance	Documents
Site Ref: WORTHING1		Address: Railway Approach Worthing West Sussex			
Site Code: Worthing		Postcode: BN11 1UR			
Name: West Coastway		Status: Live			
Group:					
Type: • References and codes					
Client: • Type					
Live Date: • Description, dimensions					
Created: • Live date					
Description: • Status					
Access Notes: • Risk aspects (e.g., asbestos, H&S issues, access)					
Site:					
Retail area:					
Category:					
Asset:					



- 2 record levels (e.g., sites and buildings)
- Site details:
  - References and codes
  - Type
  - Description, dimensions
  - Live date
  - Status
  - Risk aspects (e.g., asbestos, H&S issues, access)
- Event history including all jobs and notes
- Planned maintenance set up by calendar or usage
- Documents
- Preferred suppliers
- Site Contacts
- Other parties (e.g., tenants)
- Site template facility

## Asset Management - Locations



- Categorised by Group and Type
- Planned maintenance set up by calendar or usage
- Documents
- Event history including jobs and notes
- Area
- Floor
- Status
- Plan ref
- Block ref
- Ability to move locations
- Facility to create location template for common locations

## Asset Management - Assets



- Assets
  - Categorised by Group and Type
  - Installation
  - Ref no
  - Serial no
  - Current condition
  - Initial condition
  - Live documents related to the particular asset
  - Template documents related to Asset Library generic assets
  - Event History
  - Ability to decommission and move assets
  - Planned maintenance set up by calendar or usage
- Sub-assets etc.
  - As assets

## Asset Management - Installations



- Grouping of assets for planned maintenance
- Installation type
- Locations
- Ref no
- Serial no
- Status
- Documents
- Planned maintenance set up by calendar or usage